

Seasonal walk

Description:

Students take a walk around their local area to collect some data about the animals and plants they can find during one of the four seasons.

30 - 60 MINS

EASY

AGES 5 - 8

ACTIVITY TYPE: EXPLORATION

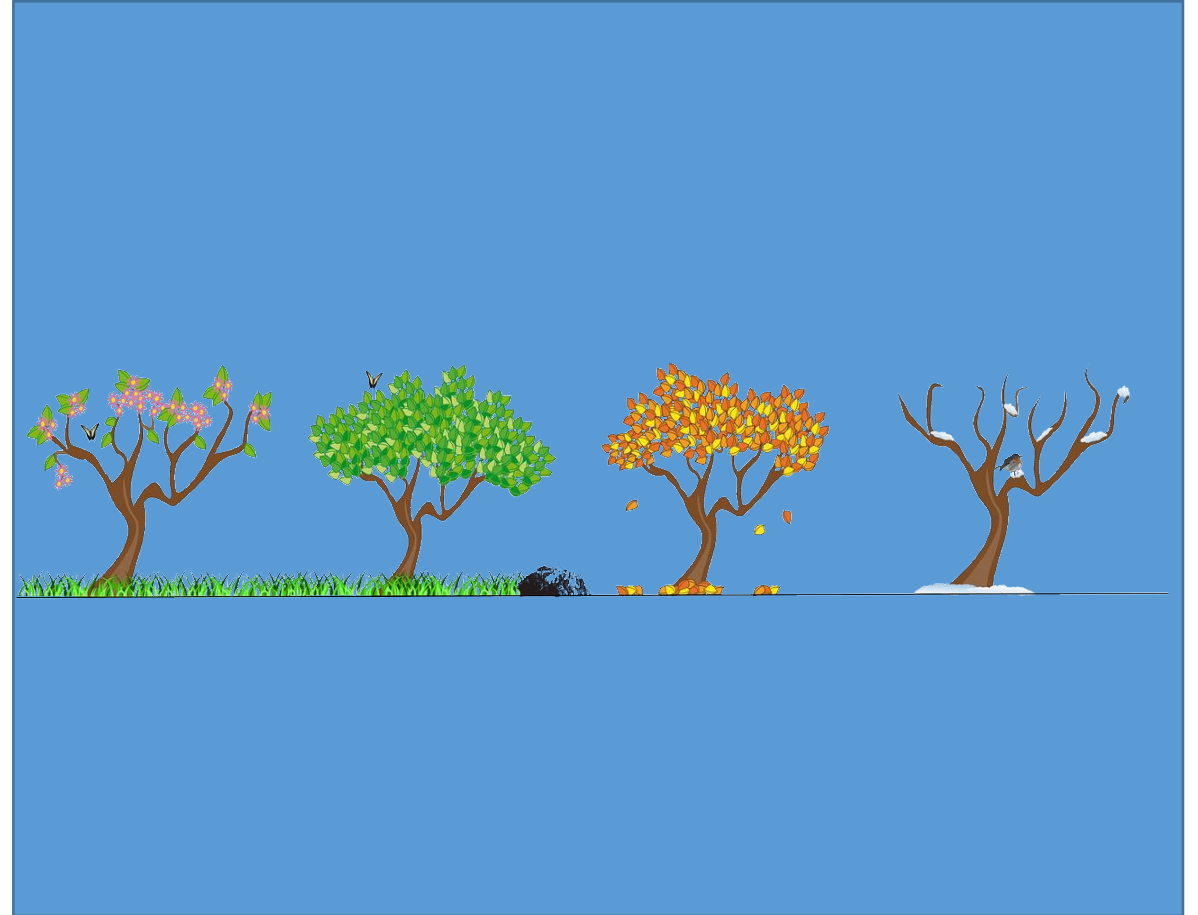


Image source: [OpenClipart-vectors/ Pixabay](https://www.openclipart-vectors.com/)

You will need:

- [Seasonal walk data collection sheet](#)
- Pencil
- Camera (optional)
- Clipboard (optional)

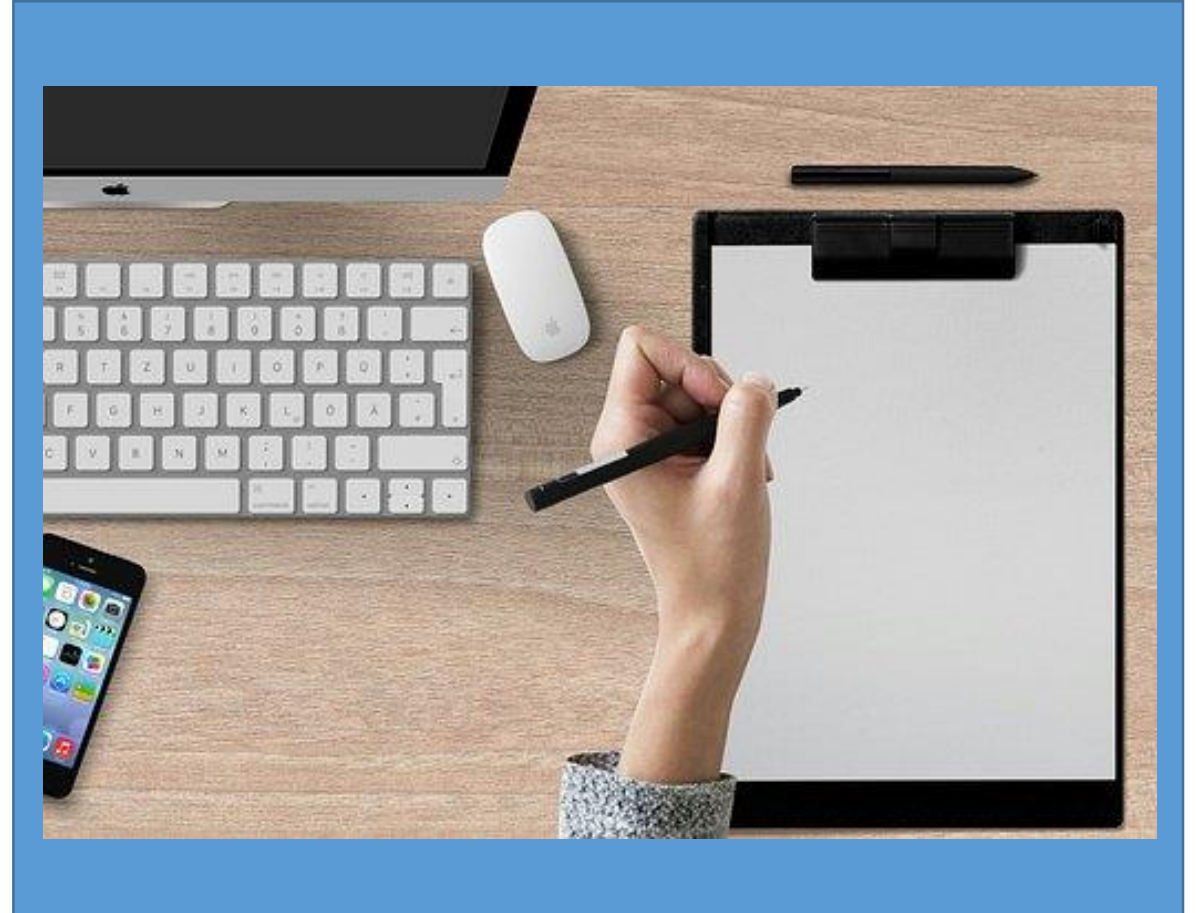


Image source: [mohamed hassan/Pixabay](#)

About the activity:

This activity will take your family on an exploration of your local area.

As you are walking, children will find and identify different plants and animals they see or hear in the environment.

They will describe the location/s where they have found the plant or animal and record the number of each they see.



Image source: [Alexas Fotos/ Pixabay](#)

Let's get started...

1

- Before leaving on the walk, identify the current season.
- Discuss some plants or animals you may discover on your walk that grow or can be seen during this season.
- If walking in autumn, you may like to take note of different types of autumn leaves you find.

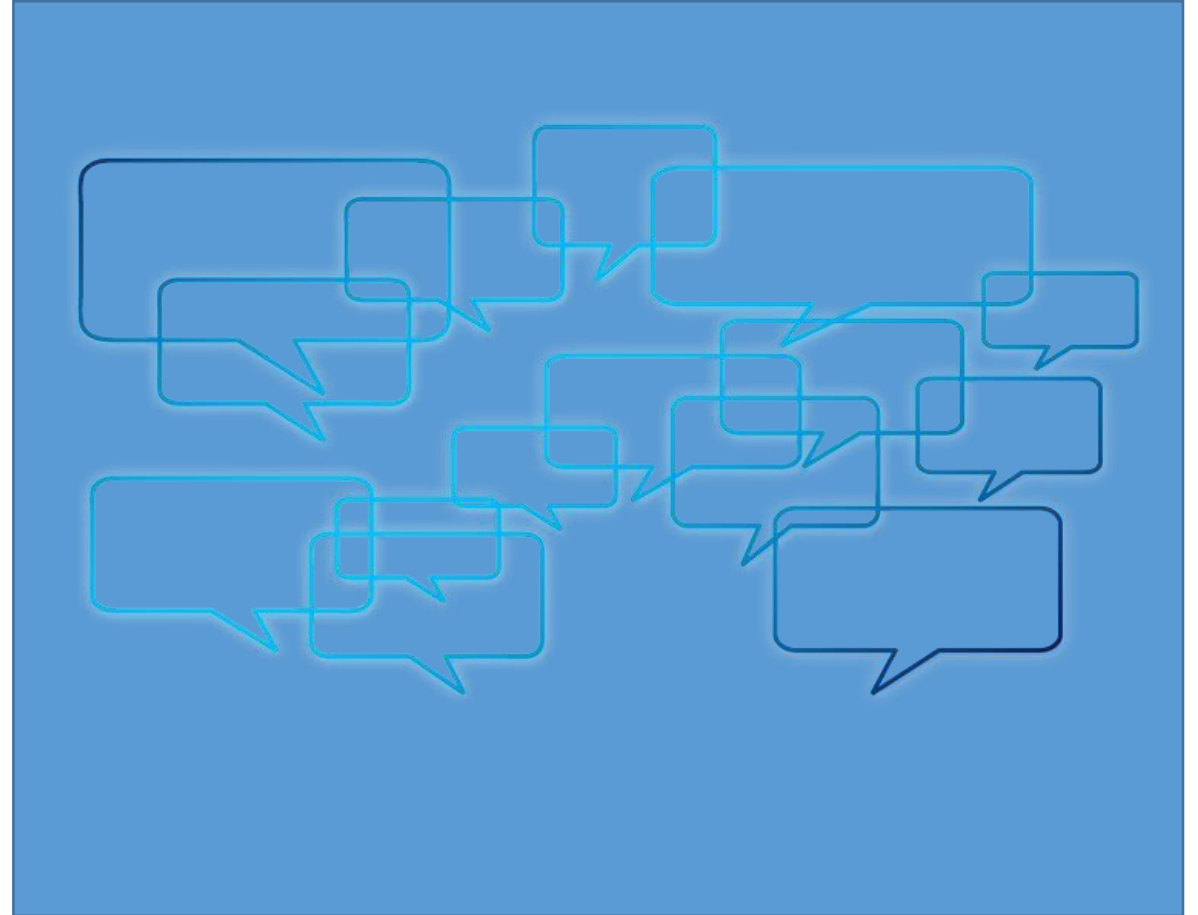


Image source: [geralt/ Pixabay](#)

What's next...

2

- Start walking around your local area.
- Look around to identify different plants or animals and draw or write what you find on the data sheet.
- Take note of the type of weather on the day you walk.

Good tip: Take a camera with you to help record your findings.



Image source: [Eframstochter/Pixabay](#)

Congratulations...

3

- Keep walking until you have found lots of different plants and animals in your local area.
- Do not forget to keep a tally of the number of each you find.

Good tip: You might like to repeat this exploration in another season and make comparisons between the different plants and animals you find at different times of the year.



Image source: [ljcor/Pixabay](#)

Resources

- The worksheet shown on the right has been prepared for you to take out and complete during your exploration.
- Alternatively, feel free to create your own way of recording your findings during the investigation.

Please note: a regular sized PDF version can be downloaded [here](#).

Seasonal Walk: Data Collecting Sheet

Take a walk around your local area and notice the different types of animals you see or hear and the different plants growing at this time of year. Use the table below to draw or write what you find.

The current season: _____

Animals		Plants	
Location: _____	Number: _____	Location: _____	Number: _____
Location: _____	Number: _____	Location: _____	Number: _____
Location: _____	Number: _____	Location: _____	Number: _____
Location: _____	Number: _____	Location: _____	Number: _____
Location: _____	Number: _____	Location: _____	Number: _____

What type of animal did you see or hear the most? _____

What type of plant did you see the most? _____

What was the weather like on the day you went walking?

Why we are learning about this ...

Data is all around us in our everyday life and even our own observations inform us.

Data can be presented to us as information in the form of numbers such as the time, date, car speed, temperature, or a train timetable. Data can be represented as symbols, such as weather icons, or presented visually as pictures or maps, or presented as text. Often data is presented using a combination of these such as when used to create an infographic.

To find out more ...

<http://www.digitaltechnologieshub.edu.au/teachers/australian-curriculum/sequencing-the-curriculum>